

# Mercury Update procedure

---

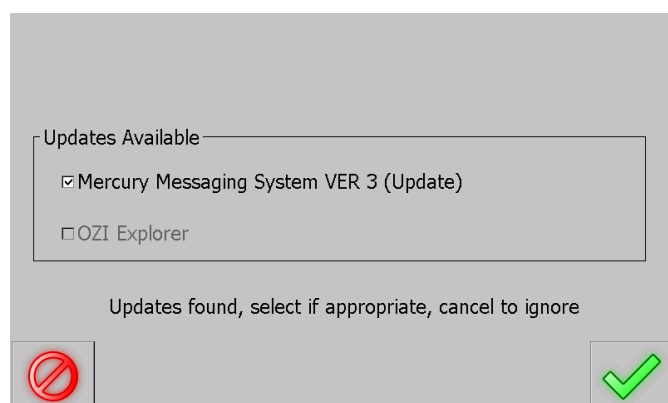
This document describes the procedure to follow when upgrading software on a Mercury device. The device is equipped with an SD-card. Restarting the device with a prepared SD-card in this slot will automatically force the device into upgrade mode.

In order for you to perform the upgrade you will need access to a PC / Laptop with a free SD-card slot. This will be used to write the SD-card which will later be inserted into the Mercury device.

You will also need to power up the Mercury device while performing the upgrade – make sure you have a power source and cable available. Permanently installed devices (such as in aircraft / vehicles) may be upgraded on-site.

Please follow the steps described carefully to ensure a problem-free upgrade.

- 1) Download the Mercury software from the Data Scout web site's download area (<http://www.datascout.co.za/upgrade.zip>). Save this zip file somewhere on the machine with the free SD-card slot.
- 2) Insert an SD-card into the PC / Laptop's SD-card slot. Make sure the SD-card is empty, if not delete all files and folders on it.
- 3) Using Windows explorer, open the previously downloaded zip file and copy the folder called "MercuryApp" to the SD-card. This should be the only folder on the SD-card. Inside this folder you should see a list of files. Do not copy the zip file to the SD-card, only its contents.
- 4) Eject the SD-card from the PC / Laptop.
- 5) If not already done, remove power from the Mercury device.
- 6) Using an Allen-key, open the lid on top of the Mercury device. This will allow access to the Mercury device's SD-card slot.
- 7) Insert the SD-card into Mercury's SD-card slot, being careful not to drop the card into the device. The card only fits in one specific way – if it does not slide in, turn it around and try again – do not force it in! Push the SD-card all the way in until you hear / feel a "click" as it is seated.
- 8) Apply power to Mercury.
- 9) After a while a screen will appear where you have the option to apply the updates, choose OK. If the screen does not appear it means the content of the SD-card is not correct. Remove power from Mercury, eject the SD-card, and go back to step 2.



- 10) Once the update has finished Mercury will continue with normal operations.
- 11) In certain cases you may be instructed to do this procedure a second time. In this case, leave the SD-card in Mercury's slot, remove power from the device, wait approximately 1 minute and re-apply power. Once the second update is finished you may continue.
- 12) Remove power from Mercury.
- 13) Remove the SD-card from Mercury by pushing it down until you hear / feel the click – the card should pop out. Replace the lid.
- 14) The unit is now ready for use.